



The goal of this workshop was to introduce neighborhood residents and community stakeholders to the Choice Neighborhoods planning process and begin encouraging residents to create visions for the future of their community. Following a kick off from our Community Ambassadors and Mayor Ward, the workshop began with a presentation about what Choice Neighborhoods is and how it can benefit communities in East Gainesville. Then, in small groups, participants were asked to map the neighborhood improvements they would like to see. The workshop was filled with rich discussions and critical conversations about who this plan is for and how to ensure that it centers the needs of current residents to enable them to stay and thrive in the neighborhood.



The workshop was facilitated by community engagement and planning consultants, COLLABO and Community Planning Collaborative.

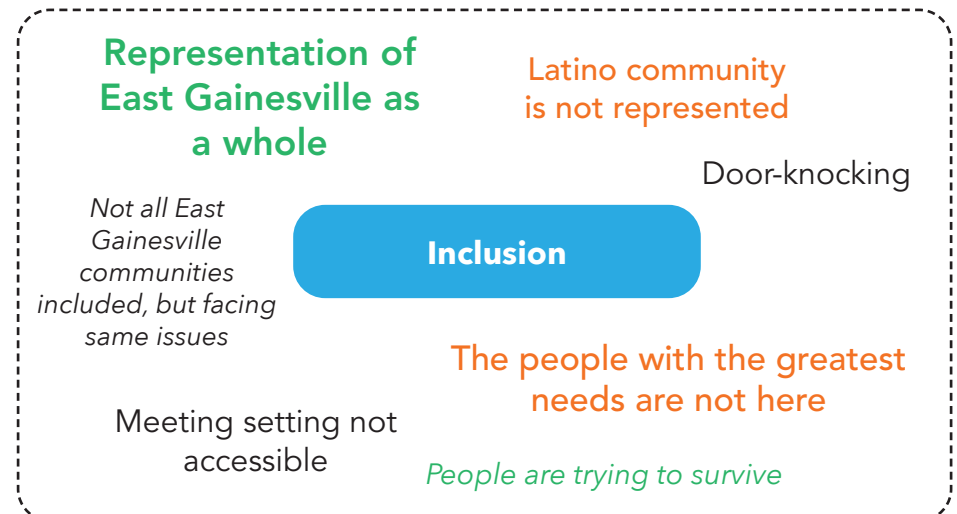
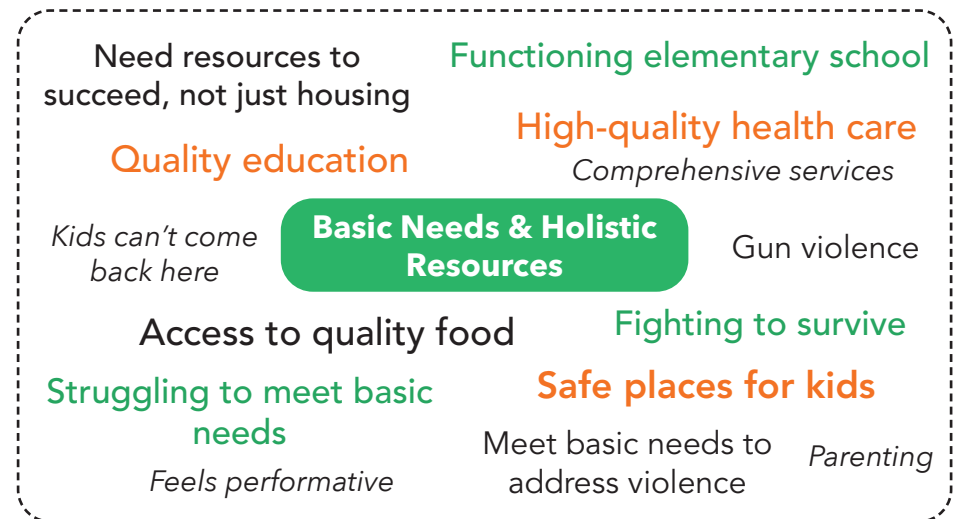
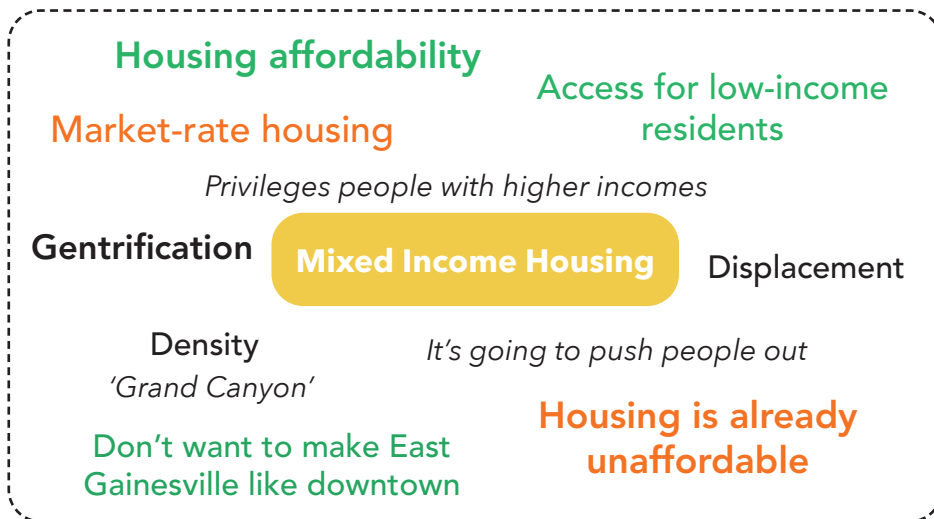


COMMUNITY WORKSHOP SUMMARY

COMMUNITY CONVERSATIONS

Throughout the workshop, community members and stakeholders helped drive discussions that reckoned with the unjust history of planning and development in East Gainesville and shared critical concerns about how to ensure an equitable future for the community. These valuable reflections, summarized below, will continue to inform the planning process, engagement strategies, and framework for the Choice Neighborhood plan's creation and implementation to ensure it is be a driver of equitable progress in East Gainesville.

Key Concerns



COMMUNITY WORKSHOP SUMMARY

COMMUNITY CONVERSATIONS

Key Concerns Continued

Redevelopment by
local Black contractors

**Don't speak in buzz
words** *Not productive*

Be specific

Economic Development

Show something tangible
Not just rhetoric

**Real economic
development**

Need quality education first

**Trust is why more
people aren't here**

Stay involved in the process
*Power to shut it down if plan
doesn't match up to what we want*

Skeptical

Trust & Outcomes

Resident
Advisory Board

**Organize a community cleanup
for all of East Gainesville**
Parents, children, schools

**City commissioners are
not delivering**
Needs and desires of residents

COMMUNITY WORKSHOP SUMMARY

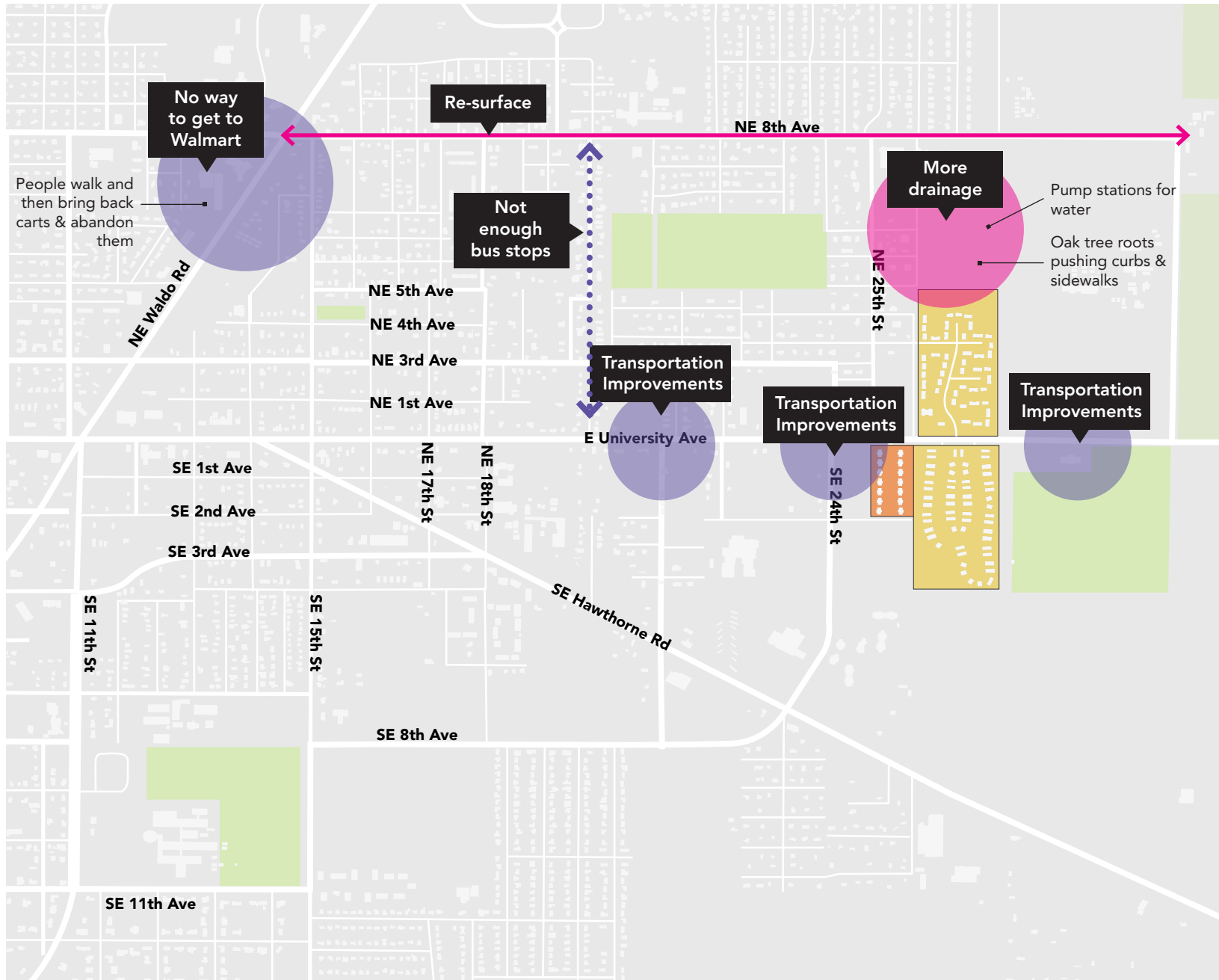
MAPPING OPPORTUNITIES

Each table was given sets of icon cards representing different types of neighborhood improvements or amenities: Park Improvements, Transportation Improvements, Shops and Services, Community Spaces, New or Improved Housing, Preserve and Enhance Existing Housing. In small groups, participants were asked to place these cards — and any other improvements, amenities, or services they would like to see in the neighborhood — on the map. While not all groups placed needs and desired opportunities on the map, the activity sparked great discussions about the types of programs, services, and investments wanted and needed in the community.



COMMUNITY WORKSHOP SUMMARY

Transportation Improvements

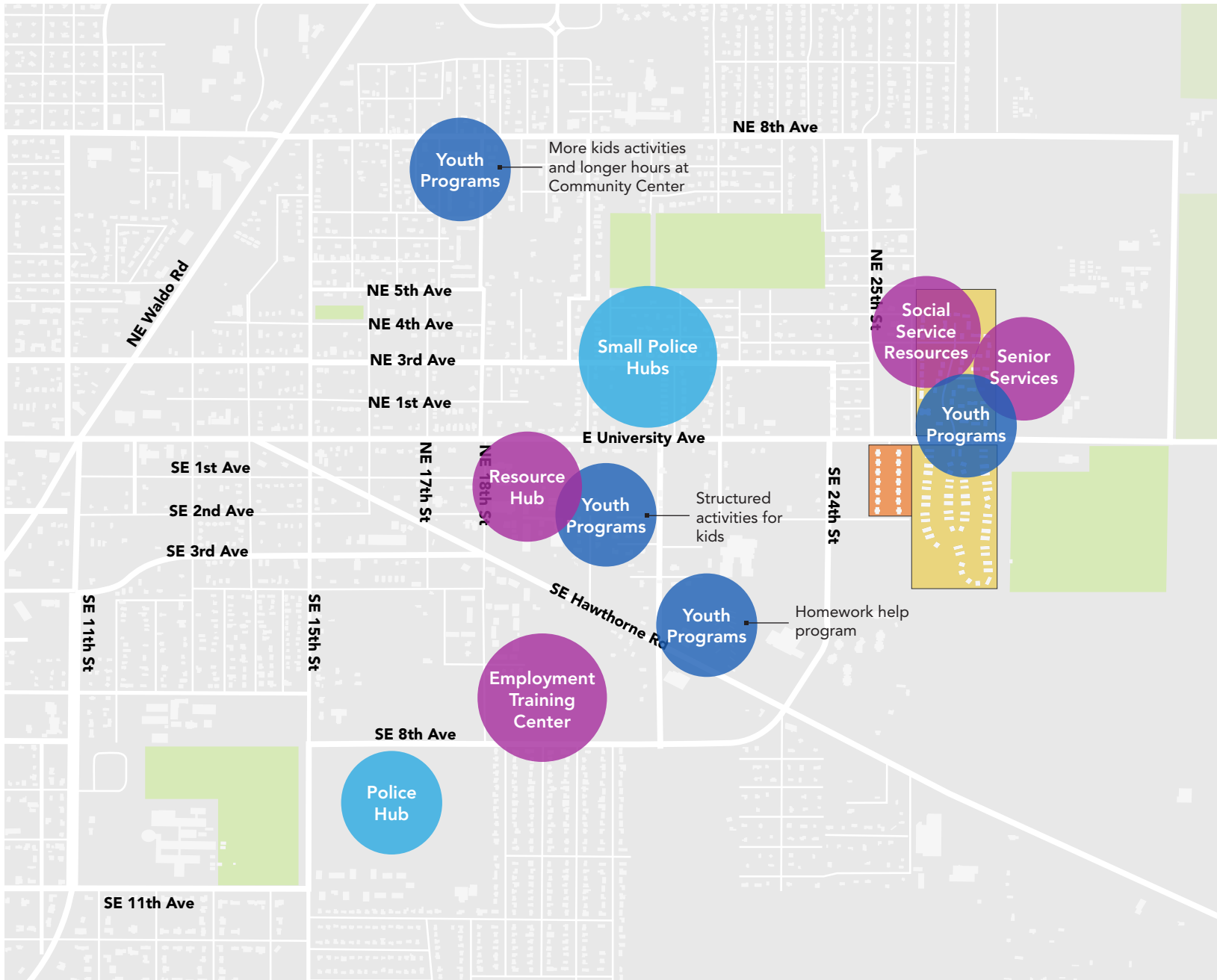


Key Insights

- » Transportation improvements along East University Avenue
- » Maintain and take care of streets, curbs and sidewalks
- » Need more bus stops throughout neighborhood — more used to come
- » Need more infrastructure development out east

COMMUNITY WORKSHOP SUMMARY

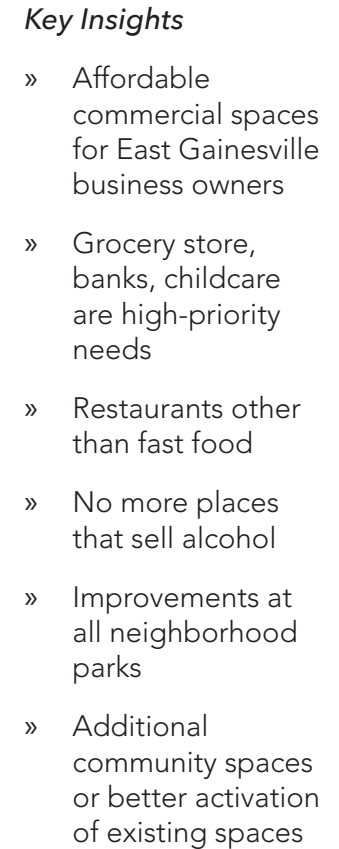
Programs & Services






Key Insights

- » Safe places for kids to go after-school, weekends and summer
- » Programs and structured activities for youth
- » Resource hubs — co-locate resources and social services
- » Programs to enhance safety and access to jobs

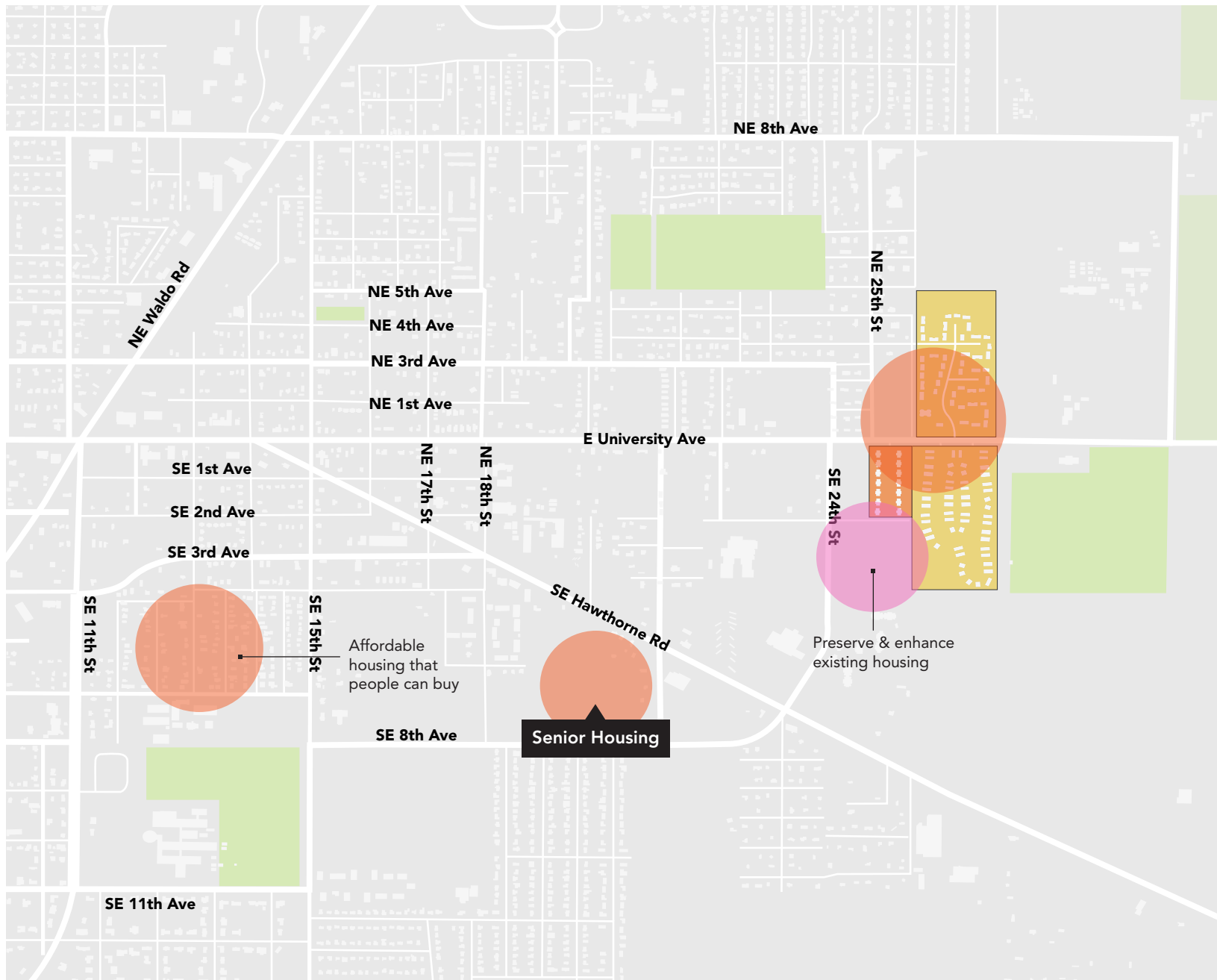
Amenities



-  Parks & Recreation
-  Shops & Services
-  Community Spaces

COMMUNITY WORKSHOP SUMMARY

Housing Improvements



Key Insights

- » Fix up dilapidated housing
- » Owners should be fined for lack of upkeep
- » New housing should look like surrounding neighborhood
- » Housing must include homeownership opportunities

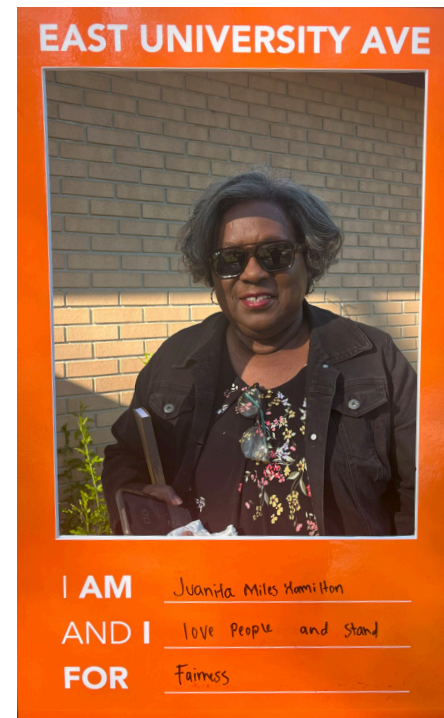
COMMUNITY WORKSHOP SUMMARY

THE PATH FORWARD

We recognize that historic disinvestment in East Gainesville and the displacement and erasure of other African American communities in our city inform your concerns. The Choice Neighborhood Planning Team is committed to addressing the historic and ongoing impacts of these actions and elevating your voices and efforts to drive positive change in East Gainesville. The journey to transform our community and create a more equitable Gainesville is ongoing, and your continued participation is key. Your feedback highlighted pressing concerns that the Choice Neighborhood Plan must center and address.

Affirming Your Experiences

- » **Affordable and Accessible Housing:** We heard your fears about being priced out of your homes, about the neighborhood changing around you without your input, and about not having pathways to ownership of your community's resources. We understand it's vital that the Plan actively combats gentrification and provides opportunities for residents to stay and grow in the neighborhood.
- » **Genuine Economic Opportunities:** You've highlighted the importance of investments that provide multiple paths to uplifting residents. We heard the need for strategies that support local entrepreneurship, provide quality education to prepares residents for careers, and ensure that opportunities created are accessible to those who live here.
- » **Set Up for Success:** Your feedback stressed the need for access to social and health infrastructure in the neighborhood. We recognize the Plan must help ensure that everyone, especially the most vulnerable among us, has access to essential services, healthy food, and quality healthcare to move from fighting to survive to accessing opportunities to thrive.



COMMUNITY WORKSHOP SUMMARY

THE PATH FORWARD

This is your neighborhood, your future — the Choice Neighborhood Plan will only be successful if it reflects your aspirations and addresses your concerns. We're not just inviting you to the table; we're building it together.

Our Commitment to Action

- » **Inclusive Planning Opportunities:** We will continue to work with local partners and stakeholders to show up where people are and create spaces where your ideas, expertise, and lived experiences can lead in shaping the Plan.
- » **Door-to-Door Visits:** Starting next month, we'll be visiting the homes of Pine Meadows and Lake Terrace residents to discuss your needs and gather feedback for each household. Our resident and community surveys are critical tools to advocate for what you want and need in your neighborhood.
- » **Community Task Forces:** We're looking for residents, local experts, and community stakeholders to join working groups that will meet 3 to 4 times this year to turn community insights into actionable Plan strategies. You can learn more and sign up to join a task force [at this link](#).
- » **Open & Honest Updates:** Trust is built on transparency. We commit to keeping you informed about how your contributions are influencing our project plans and to being clear about where we stand at every step.

We hope the East University Avenue Choice Neighborhood Plan can anchor and amplify the power of East Gainesville's ongoing efforts to advance community-driven change. Thank you for trusting us with your stories, for your continued engagement, and for your critical oversight.

Learn more at www.gainesvillechoice.com

